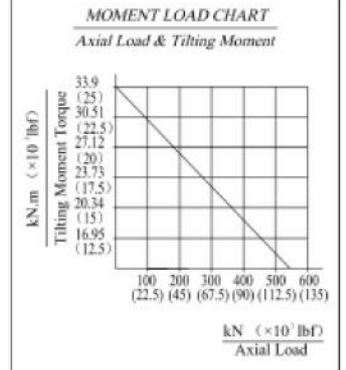


Worm Drive Performance Data		
Output Speed (Intermittent)	1.2 rpm	
Output Torque (Max.)	3450.3 N.m	2546.3 lbf.ft
Tilting Moment Torque (Max.)	33.9 kN.m	$25.02 \times 10^3$ lbf.ft
Holding Torque	38.7 kN.m	$28.56 \times 10^3$ lbf.ft
Axial Load (Max.)	550 kN	$123.7 \times 10^3$ lbf
Radial Load (Max.)	205 kN	$46.1 \times 10^3$ lbf
Ratio of Worm Gear	62:1	
Backlash	$\leq 0.15^\circ$	
Hydraulic Motor Performance Data		
Pressure	12 MPa	
Flow	10 L/min	



### Hydraulic Motor Performance Data

BMRS100 [100.8 cm<sup>3</sup>/rev.]

Flow (L/min)	Pressure (MPa)							
	5	7	9	10	12	14	16	17.5
10	70	100	122	138	159	182	210	222
	99	95	87	84	74	63	52	44
20	68	95	123	143	165	200	221	238
	199	194	188	182	175	162	150	138
30	62	94	121	140	164	194	220	240
	299	294	288	284	278	263	249	236
40	59	88	119	134	161	192	218	238
	400	398	387	385	380	366	350	336
50	55	83	117	125	157	185	217	235
	498	496	488	484	475	464	450	436
60	48	79	110	119	152	180	214	233
	599	595	587	585	579	569	552	538
70	43	70	100	112	142	170	201	229
	699	693	687	683	679	668	648	636
75	39	63	97	105	140	167	197	227
	748	741	737	735	720	713	697	686

Torque (N.m) 240  
Speed (rpm) 236

Note: Side A facing up when mounted.

B	02/07/2014	LWH	<a href="http://www.eurograb.nl">www.eurograb.nl</a> / <a href="mailto:info@eurograb.nl">info@eurograb.nl</a>				
REV	DATE	REVISER	DESCRIPTION				
DESIGNED BY	XZL	30-06-2014	<b>Eurograb</b> <b>Aanbouwdelen</b> 				
CHECKED BY	WDY	30-06-2014					
APPROVED BY	Andy	30-06-2014					
ALL PROPRIETARY RIGHTS IN THE SUBJECT MATTER HERE OF ARE RESERVED, AND NO PERMISSION IS GRANTED OR TO DISCLOSE REPRODUCE THIS PRINT IN WHOLE OR IN PART, ANY OF THE INFORMATION TO OTHERS.			WEIGHT	SCALE	Title	WORM DRIVE	
			SIZE	1:3.8	Model No.	WEA9	
SYMBOL ISO			SHEET	1 / 1	Part No.	62-HR-100-I-2224	Rev B